

# SENSORS

Indoor | Outdoor

Hardware | Product overview



LoRa Gateway  
In-/Outdoor



**Blue5  
LoRa Gateway  
Compact Mini Plus 56**

Item-No.: 11246

- W 110 x H 75 x D 24 mm
- 474 Gram
- Protection: IP30
- LoRaWAN®, 4G, WiFi, Ethernet
- Operating Temperature: -20 °C to +60 °C
- Mains operation
- Accessories: Bornemann Sensors



**Blue5  
LoRa Gateway  
Compact 65**

Item-No.: 10595

- W 180 x H 110 x D 56,5 mm
- 658 Gram
- Protection: IP65
- LoRaWAN®, 4G, WiFi, Ethernet
- Operating temperature: -40 °C to +70 °C
- Mains operation
- Accessories: Bornemann Sensors



**Cavea  
LoRa Gateway  
Compact Pro 67**

Item-No.: 10539

- W 250 x H 172 x D 92 mm
- 1480 g
- Protection: IP67
- LoRaWAN®, 4G, WiFi, Ethernet
- Operating temperature: -40 °C to +70 °C
- Power supply
- Range: max. 15 km
- Accessories: LoRaWAN® sensors + Cavea TAGs



**LoRa  
Contact sensor  
EM300-MCS**

Item-No.: 10535

- W 105.6 x H 85.3 x D 27 mm
- 119 g
- Protection: IP67
- LoRaWAN®
- Operating temperature: -30 °C to +70 °C
- 4000 mAh ER18505 Li-SOCl<sub>2</sub> battery
- Magnetic contact switch for windows and doors



**LoRa  
Liquid sensor  
EM300-SLD/ZLD**

Item-No.: 10547/11337

- W 85 x H 58 x D 18 mm
- 188 g
- Protection: IP67
- LoRaWAN®
- Operating temperature: -30 °C to +70 °C
- 4000 mAh ER18505 Li-SOCl<sub>2</sub> battery
- Instant leak detection for real estate or industrial facilities



**LoRa  
Ambient sensor  
EM300-TH**

Item-No.: 10537

- W 105.6 x H 85.3 x D 27 mm
- 160 g
- Protection: IP67
- LoRaWAN®
- Operating temperature: -30 °C to +70 °C
- 4000 mAh ER18505 Li-SOCl<sub>2</sub> battery
- Temperature and humidity sensor

300

300 series

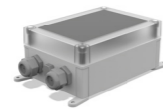
Long Range BLE



**Cavea  
Long Range BLE  
Gateway KG03**

Item-No.: 11265

- W 220 x H 130 x D 81 mm
- 350 g
- Protection: IP67
- BLE 5.0, WiFi, Ethernet, LTE
- Operating temperature: -30 °C to +75 °C
- Power supply
- Accessories: Cavea TAGs



**Cavea  
Mesh  
Wirepas Gateway**

Item-No.: 11118

- W 180 x H 130 x D 81 mm
- 867 g
- Protection: IP67
- BLE 5.0, WiFi, LAN, LTE, Mesh
- Operating temperature: -20 °C to +50 °C
- Power supply
- Accessories: Cavea TAGs



**Cavea  
AoA  
Locator**

Item-No.: 11110

- W 330 x H 330 x D 53 mm
- 650 g
- Protection: IP43 / IP68
- BLE AoA
- Operating temperature: -20 °C to +70 °C
- Power over Ethernet
- Accessories: Cavea Router + Cavea TAGs



**LoRa  
Distance sensor  
EM310-UDL**

Item-No.: 11009

- W 111 x H 62 x D 40 mm
- 198 g
- Protection: IP67
- LoRaWAN®
- Operating temperature: -15 °C to +60 °C
- 2x 3500 mAh ER17505 Li-SOCl<sub>2</sub> battery
- Reliable level and distance monitoring with the assistance of ultrasonic



**LoRa  
Ambient sensor  
EM320-TH**

Item-No.: 11312

- W 85 x H 58 x D 18 mm
- 400 g
- Schutzart: IP67
- LoRaWAN®
- Operating temperature: -30 °C to +70 °C
- 2x 2700 mAh ER14505 Li-SOCl<sub>2</sub> battery
- Suitable for e.g. food/pharmaceutical or transport room monitoring



**LoRa  
Tilt sensor  
EM320-TILT**

Item-No.: 11314

- W 85 x H 58 x D 18 mm
- 400 g
- Protection: IP67
- LoRaWAN®
- Operating temperature: -30 °C to +70 °C
- 2x 2700 mAh ER14505 Li-SOCl<sub>2</sub> battery
- Immediate detection of movements or angle changes of objects

3xx

310/320 series

Outdoor sensor  
technology



**LoRa  
Parking sensor  
SM009**

Item-No.: 11183

- ø 202 x H 30 mm
- 554 g
- Protection: IP68
- LoRaWAN®
- Operating temperature: -40 °C to +85 °C
- Integrated 20 Ah battery
- Surface-mounted parking sensor for smart city management



**LoRa  
Parking sensor  
IG009**

Item-No.: 11184

- ø 130 x H 87 mm
- 800 g
- Protection: IP68
- LoRaWAN®
- Operating temperature: -40 °C to +85 °C
- Integrated 20 Ah battery
- In ground-mounted parking sensor for smart city management



**LoRa  
Noise sensor  
SL009**

Item-No.: 10870

- W 200 x H 120 x D 60 mm
- 610 g
- Protection: IP65
- LoRaWAN®, WiFi, Ethernet, NBIOT
- Operating temperature: -40 °C to +75 °C
- Power over Ethernet
- Microphone-based sensor for volume and noise level monitoring



**LoRa  
Distance sensor  
EM400-TLD ToF**

Item-No.: 11316

- W 118 x H 65 x D 30 mm
- 500 g
- Protection: IP67
- LoRaWAN®, NB-IOT CAT M1
- Operating temperature: -30 °C to +70 °C
- 2x 9000 mAh ER26500 Li-SOCl<sub>2</sub> battery
- Durable laser distance sensor with tilt detection for e.g. smart waste management



**LoRa  
Distance sensor  
EM400-TLD ToF**

Item-No.: 11316

- W 118 x H 65 x D 32.5 mm
- 500 g
- Protection: IP67
- LoRaWAN®, NB-IOT CAT M1
- Operating temperature: -30 °C to +70 °C
- 2x 9000 mAh ER26500 Li-SOCl<sub>2</sub> battery
- Durable ultrasonic distance sensor for e.g. smart parking in underground car parks



**LoRa  
Distance sensor  
EM400-UDL C050**

Item-No.: 11320

- W 118 x H 65 x D 32.5 mm
- 500 g
- Protection: IP67
- LoRaWAN®, NB-IOT CAT M1
- Operating temperature: -30 °C to +70 °C
- 2x 9000 mAh ER26500 Li-SOCl<sub>2</sub> battery
- Durable ultrasonic distance sensor for e.g. level measurements or snow height detection

400

400 series

Indoor sensor  
technology



**LoRa  
Room sensor  
AM107**

Item-No.: 10527

- W 105 x H 70.4 x D 21.2 mm
- 160 g
- Protection: IP30
- LoRaWAN®
- Operating temperature: 0 °C to +45 °C
- 2x AA batteries
- Reliable monitoring of: Indoor air, temperature, humidity, light, and more.



**LoRa  
Panic button  
PB004**

Item-No.: 11340

- W 75 x H 38.9 x D 15.5 mm
- 48 g
- Protection: IP66
- LoRaWAN®
- Operating temperature: -10 °C to +60 °C
- 540 mAh battery
- Small and compact alarm button for multiple applications



**LoRa  
People counter  
VS133**

Item-No.: 11310

- W 180 x H 26 x D 72 mm
- 500 g
- Protection: IP40
- LoRaWAN®
- Operating temperature: -20 °C to +50 °C
- Mains operation, 802.3at Power over Ethernet
- Optical, AI-supported people counting sensor



**LoRa  
Level sensor  
EM500-UDL**

Item-No.: 10581/10599

- W 156.1 x H 71 x D 69.5 mm
- 498 g
- Protection: IP66
- LoRaWAN®
- Operating temperature: -30 °C to +65 °C
- 19000 mAh ER34615 Li-SOCl<sub>2</sub> battery
- Professional ultrasonic sensor for distance and level measurements



**LoRa  
Soil sensor  
EM500-SMTC**

Item-No.: 10551

- W 105.4 x H 71 x D 69.5 mm
- 500 g
- Protection: IP66
- LoRaWAN®
- Operation temperature: -30 °C to +70 °C
- 19000 mAh ER34615 Li-SOCl<sub>2</sub> battery
- Professional probe-based sensor for measuring soil conditions



**LoRa  
Water level sensor  
EM500-SWL**

Item-No.: 10545

- W 105.4 x H 71 x D 69.5 mm
- 500 g
- Protection: IP66
- LoRaWAN®
- Operating temperature: -30 °C to +70 °C
- 19000 mAh ER34615 Li-SOCl<sub>2</sub> battery
- Professional probe-based sensor for water level monitoring

500

500 series

# Discover our entire product range at **bornemann.shop**



## bornemann®

**Bornemann Distribution GmbH**  
Im Fliegerhorst 10 | D-38642 Goslar  
Tel.: +49 (0) 5321 5182 552  
distribution@bornemann.net | www.bornemann.shop  
CEO: Lars Bornemann | Leon Bornemann

Subject to changes, errors and misprints.  
Hardware shown may vary in color and shape. Logos and  
brand names are the property of the respective  
companies.